



# TRANSHIPMENT EXPERIENCE AND PROJECTS HANDLED

ADVENTURE OFFSHORE LTD



## About the Company

- Our Story
- Mission, Vision, Values
- Our Certifications



## Performance Results

- Vessels managed
- Technical Management
- Satisfied Clients



## Organogram

- Emergency Response Team
- Management Review Team



## Our Story

---

ADventure Offshore Ltd is a ship management entity, with a track record spanning over 10 years, we've successfully and exclusively focused on the maritime industry, providing comprehensive technical, crew management and special project services for various ship entities, and vessels owners across west and central African region as well as in Europe

# OUR VISION, MISSION AND VALUES



ADventure aims to become a trusted maritime partner, providing cost-effective, sustainable, tailor-made, timely and efficient ship management solutions to clients across the West and Central Africa region



Our vision is to become the preferred integrated ship operator and manager across Africa.



Ambition

Teamwork

Delivery

Professionalism

# OUR CERTIFICATIONS



ADventure Offshore holds :

- **ISO 9001:2015** certification from Det Norske Veritas (DNV)
- **Seafarer Manning Office Management system (SMO)** certification from Bureau Veritas (BV)
- Robust Safety Management System

# VESSELS MANAGED

- We always seek to operate vessels efficiently in compliance with environmental, statutory requirements as it requires a wide scope of expertise and experience.
- We strive to operate all managed vessels in the safest and most efficient manner possible to meet the requirements of ship owners, flag states, port states, class societies, charterers and other stakeholders in full compliance with the required regulations.



# NORD FRANCEVILLE

(FORMER – AOS STAR)



- YEAR BUILT : 2006
- LENGTH OVERALL – 36.00M
- ENGINE / POWER :
- CLASS : BV
- FLAG : PANAMA

# NORD LIBREVILLE

(FORMER – AOS ENERGY)



- YEAR BUILT : 2006
- LENGTH OVERALL : 36.10M
- ENGINE / POWER : 1574.36 BHP
- CLASS : CCS
- FLAG : PANAMA



# NORD LAMBARENE

(FORMER – MCS IRIS)



- YEAR BUILT : 2006
- LENGTH OVERALL : 25.25 M
- ENGINE / POWER : 3000BHP
- CLASS : BV
- FLAG : PANAMA

# NORD MOANDA

(FORMER – MCS ANIE)



- YEAR BUILT: 2006
- LENGTH OVERALL : 25.25M
- ENGINE / POWER: 3000BHP
- CLASS: ABS
- FLAG : PANAMA

# TECHNICAL MANAGEMENT

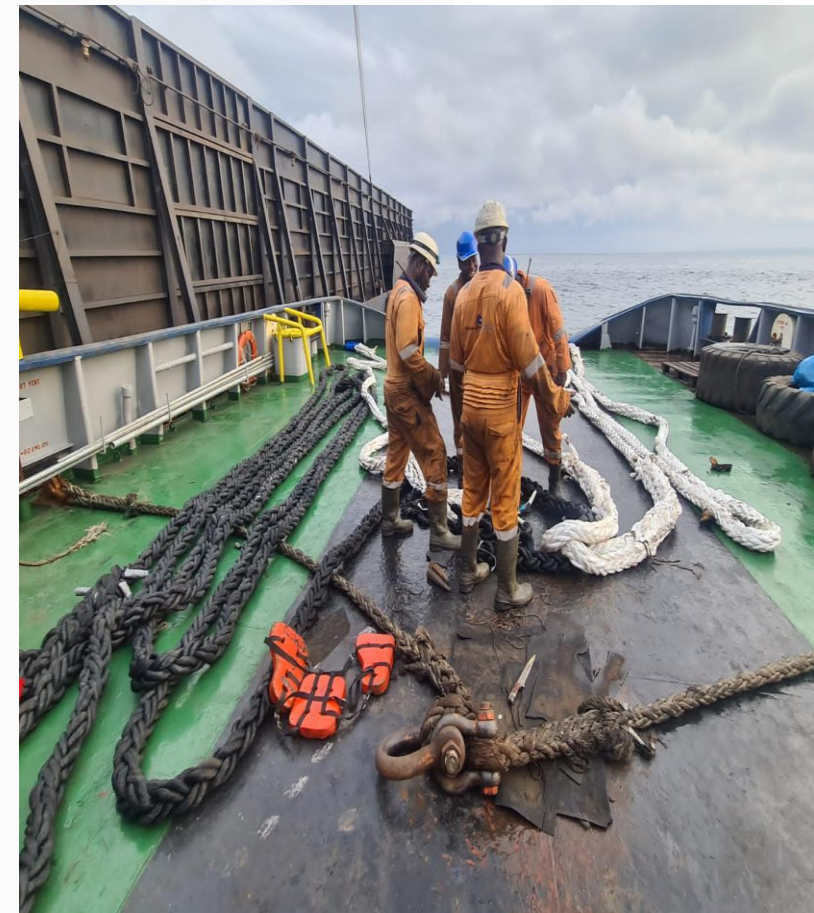
(Vessel Maintenance)



- We offer a high-quality Full Technical Management service with our fully equipped team who also serve as an effective emergency response team where we monitor the vessel's performance with respect to specific machinery, hull efficiency, effectiveness of planned maintenance and our ability to find cost efficient solutions
- We also ensure that our Safety Management System is developed, implemented and maintained by further monitoring the performance of the vessel, the ship's staff and company procedures by further scheduled inspections and audits onboard by our ship superintendents

# TRANSHIPMENT EXPERIENCE

We initially handled the Jeroboam Manganese Project for Norden Gabon AS by providing competent crew, management of tugs, barges and technical management

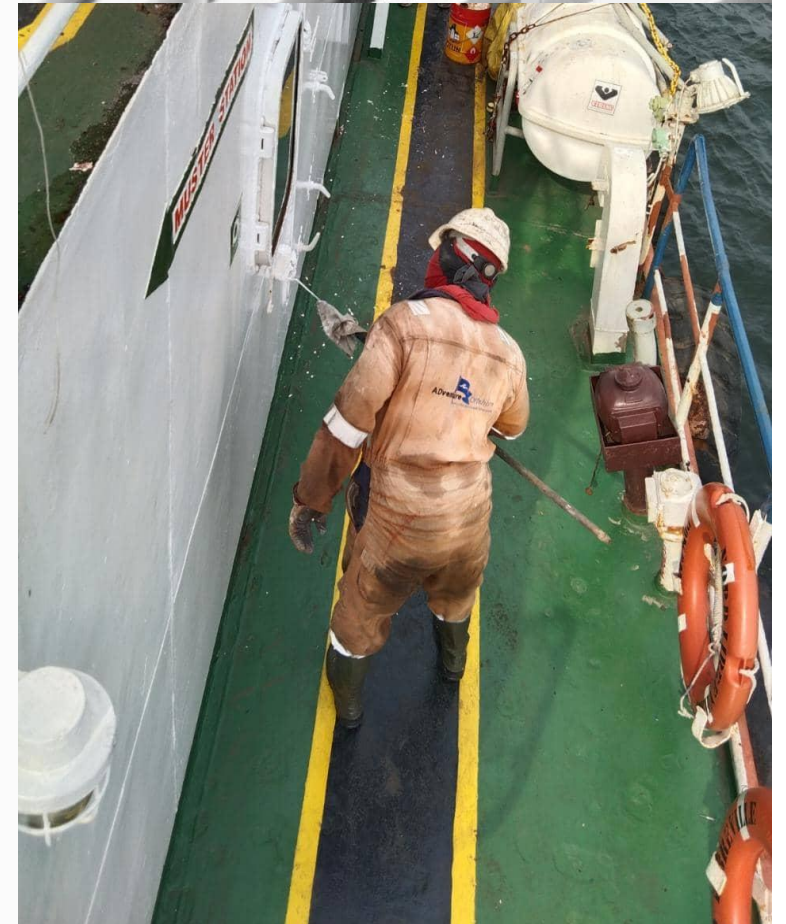


# EXPERIENCED CREW



- At ADventure Offshore Ltd, we can boast of a proven track record of managing vessels such as DP 2 AHTS, ASD and Twins Screw Tugs as well as 300ft x 80 x 18 Barges with our large pool of Officers and Ratings and their hands-on experience.
- We operate a careful and thorough screening and recruitment process to ensure the identification of the best candidates for our vessels
- They are highly trained and committed to our Company, vessels, and clients' needs. We implement strong policies and procedures to ensure high standards are achieved and maintained
- Our approach is all about partnership. We take the time to deeply understand your needs, unique market, and audience to provide efficient, reliable, compliant, and safe vessels
- ADventure Offshore has a high crew retention rate due to prioritizing crew welfare and embracing equality, team spirit, and family values.

# EXPERIENCED CREW



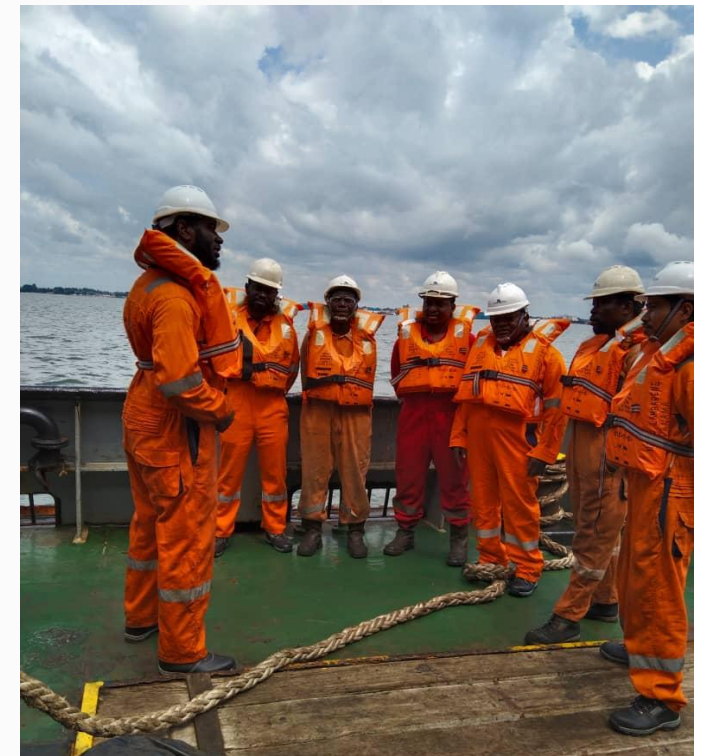
# SATISFIED CLIENTS



# SAFETY CULTURE

Our Safety Management System(SMS) and Quality Management System(QMS) &EMS is crucial in everything we do, not only fundamental to our environmental commitment, but also the basis for the Company's efficient and harmonious operations.

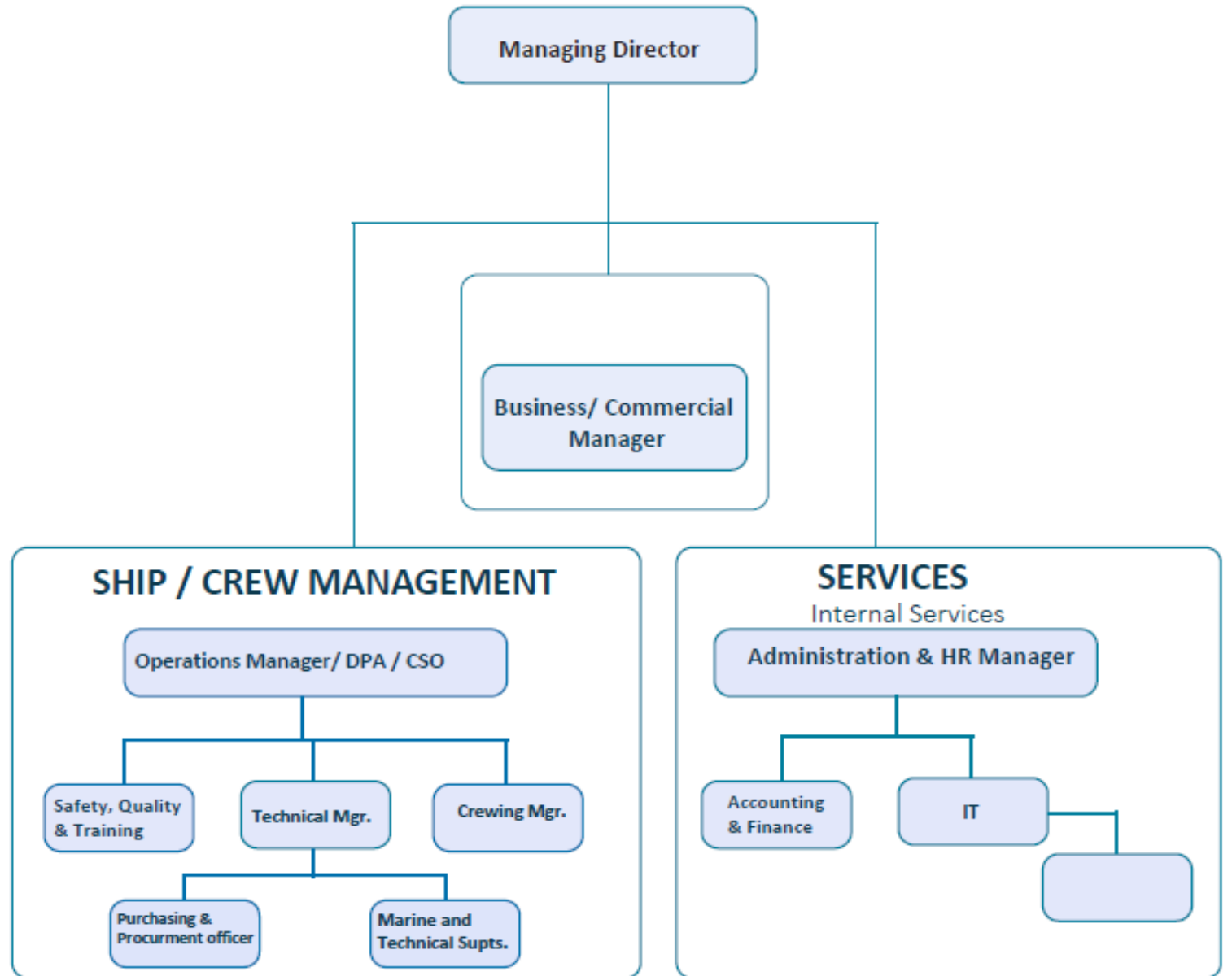
We work as a team together with our Happy Crew to constantly improve our safety standards by involving them through targeted training and positive reinforcement of safe behavior. This fosters a positive attitude to support safety culture. This ensures our clients' assets, operations and interests are protected at sea and onshore







# ORGANOGRAM





---

**Wrap Up**